



**Construction**

Close-coupled centrifugal pumps with open impeller.  
Free-flow impeller (vortex or recessed impeller) for type C 16/1E.

**Applications**

For moderately dirty liquids or emulsions.  
For industry and agriculture.

**Operating conditions**

Liquid temperature from -10 °C to +90 °C.  
Ambient temperature up to 40 °C.  
Total suction lift up to 8 m.  
Maximum permissible working pressure: 6 bar.  
Maximum size of solids: 4 mm.  
Continuous duty.

**Motor**

2-pole induction motor, 50 Hz (n = 2900 rpm).

**C:** three-phase 230/400 V ± 10%.

**CM:** single-phase 230 V ± 10%, with thermal protector.

Capacitor inside the terminal box.

Insulation class F.

Protection IP 54.

Constructed in accordance with: IEC 34.

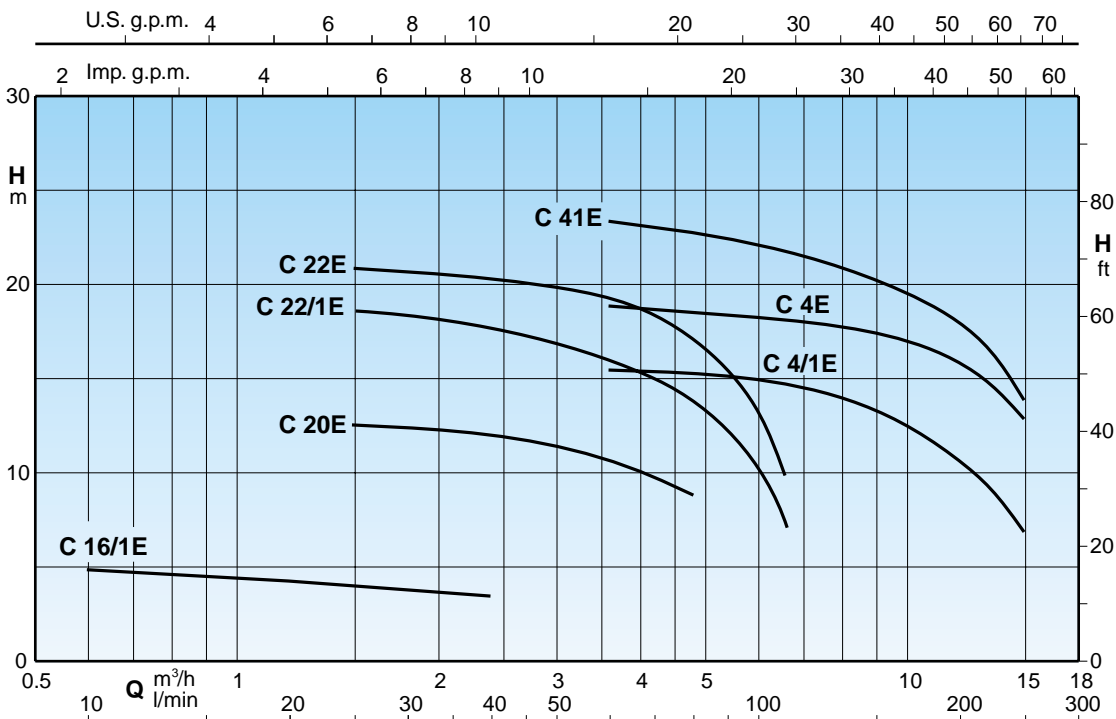
**Materials**

Component	C	B-C
Pump casing	Cast iron GJL 200 EN 1561	Bronze G-Cu Sn 10 UNI 7013
Lantern bracket	Cast iron GJL 200 EN 1561	Bronze G-Cu Sn 10 UNI 7013
Impeller	Brass P- Cu Zn 40 Pb 2 UNI 5705	
Shaft	Chrome-nickel steel 1.4305 EN 10088 (AISI 303)	Cr-Ni-Mo steel 1.4401 EN 10088 (AISI 316)
Mechanical seal	Carbon - Ceramic - NBR	

**Special features on request**

- Other voltages.
- Frequency 60 Hz (as per 60 Hz data sheet).
- Protection IP 55.
- Special mechanical seal
- Higher or lower liquid or ambient temperatures.

**Coverage chart n ≈ 2900 rpm**



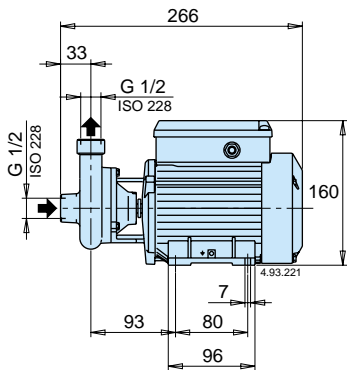


**Performance  $n \approx 2900$  rpm**

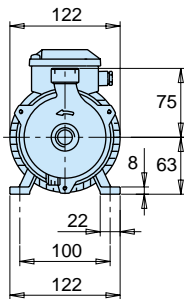
3 ~	230V 400V		1 ~	230V		P <sub>1</sub>	P <sub>2</sub>	Q																						
	A	A		A	kW				kW	HP	m <sup>3</sup> /h	0,6	0,9	1,2	1,5	1,8	2,4	3	3,6	4,8	6	6,6	8,4	9,6	10,8	12	13,2	15		
C 16/1E B-C 16/1E		1,7 1	CM 16/1E B-CM 16/1E		1,2	0,16	0,15	0,2	H m	5	4,7	4,4	4,2	4	3,6															
C 20E B-C 20E		1,9 2,3	1,1 1,3	CM 20E B-CM 20E		2,5 2,8	0,4	0,37		0,5																				
C 22/1E B-C 22/1E		2,4 2,3	1,4 1,3	CM 22/1E B-CM 22/1E		3 3,6	0,8	0,45		0,6																				
C 22E B-C 22E		2,8 3	1,6 1,7	CM 22E B-CM 22E		3,5 4,5	0,9	0,55		0,75																				
C 4/1E		3	1,7	CM 4/1E		4,5	0,91	0,55		0,75																				
C 4E B-C 41/1E		3,7 4	2,2 2,3	CM 4E B-CM 41/1E		5,7 5,8	1,2	0,75		1																				
C 41E B-C 41E		5	2,9	CM 41E B-CM 41E		7,4	1,6	1,1		1,5																				

P<sub>1</sub> Maximum power input. B-C, B-CM = Bronze construction.  $\rho$  = Density 1000 kg/m<sup>3</sup>. Tolerances according to ISO 9906, annex A.  
P<sub>2</sub> Rated motor power output. H Total head in m.  $\nu$  = Kinematic viscosity max 20 mm<sup>2</sup>/sec.

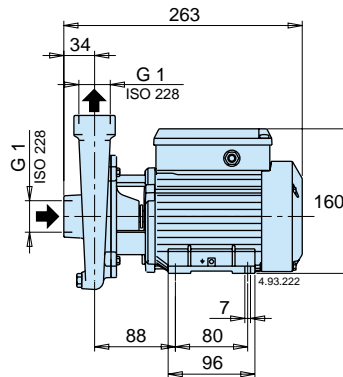
**Dimensions and weights**



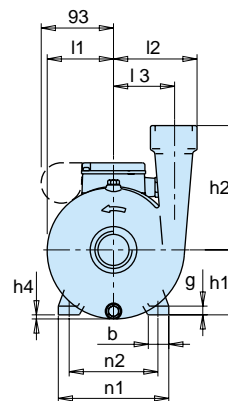
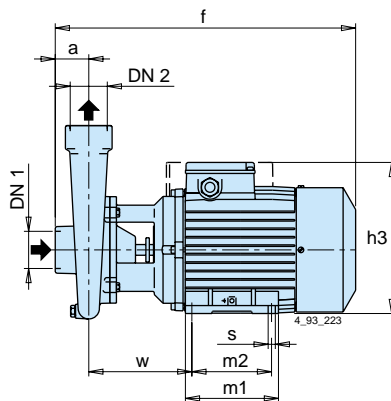
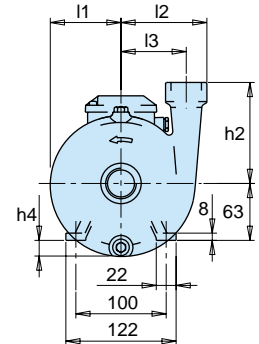
TYPE	kg
C 16/1E	5,2
CM 16/1E	5,2



TYPE	kg
B-C 16/1E	5,6
B-CM 16/1E	5,6



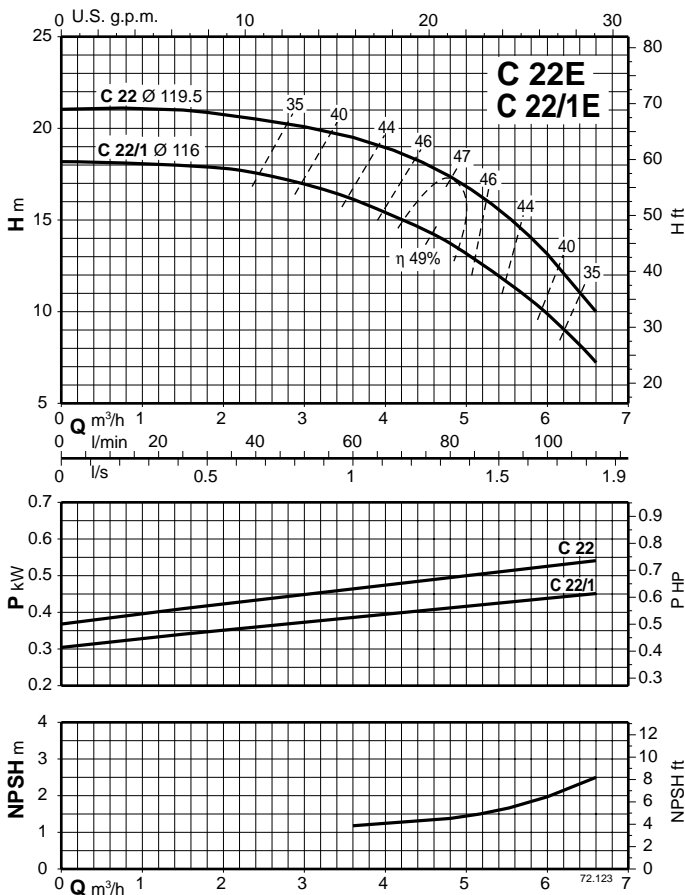
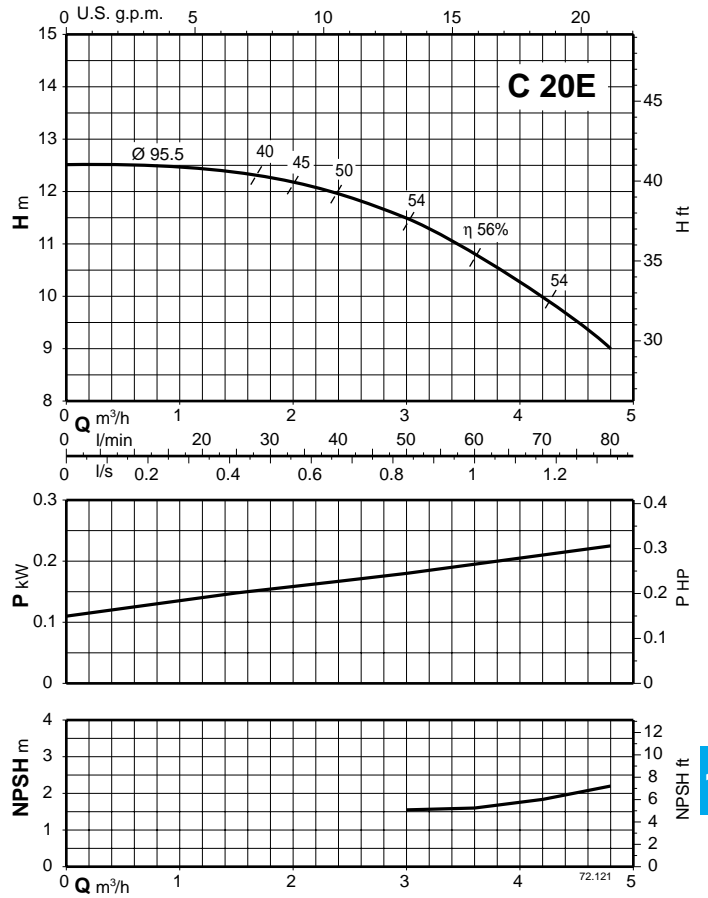
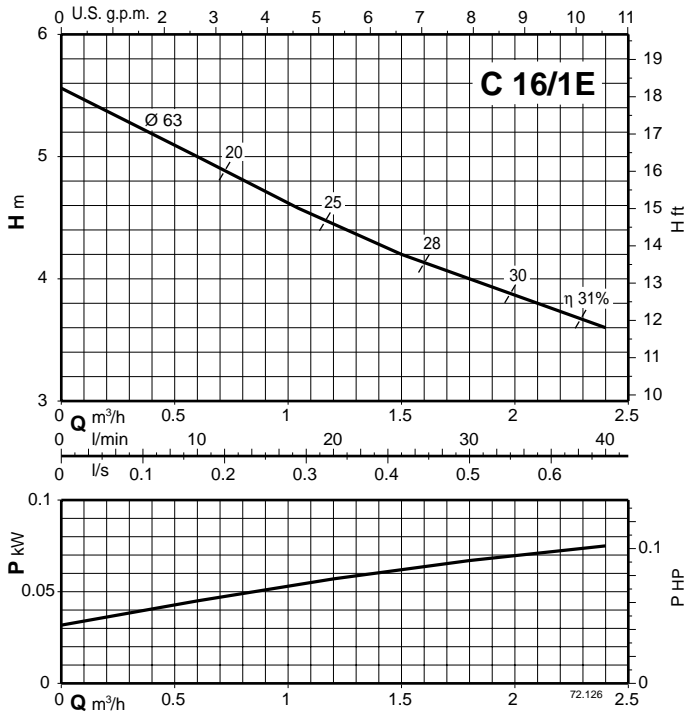
TYPE	mm					kg	
	h2	h4	l1	l2	l3	C	CM
C 20E	90	5	67	82	60	6,8	6,8
C 22/1E - C 22E	110	17	77	94	71	8 - 8,3	8 - 8,3



TYPE	DN <sub>1</sub>	DN <sub>2</sub>	mm																	kg			
			ISO 228	a	f	h1	h2	h3	h4	m1	m2	n1	n2	b	s	l1	l2	l3	w	g	C	CM	B-C
- B-C 20E	G 1	G 1	35	303	71	90	177	-	106	90	134	112	22	7	70	84	60	105	10	-	-	9,1	9,1
- B-C 22/1E - B-C 22E	G 1	G 1	35	303	71	110	177	9	106	90	134	112	22	7	81	93	71	106	10	-	-	9,3 9,6	10,3 10,6
C 4/1E C 4E	- -	G 1/2 G 1/2	43	304	71	160	177	18	106	90	134	112	22	7	85	108	78	100	10	10,8 11,8	11,8 12,8	- -	- -
- B-C 41/1E C 41E B-C 41E	G 1/2	G 1/2	43	380	80	160	190	9	125	100	155	125	30	9,5	85	108	78	132	10	- 18,5	- 19,3	16,3 19,2	17,9 20,1



**Characteristic curves  $n \approx 2900$  rpm**





**Characteristic curves  $n \approx 2900$  rpm**

