



Construction

Self-draining, single-impeller pumps, with motor insulated from pumped water, constructed with high quality, corrosion-proof plastic materials, with stainless steel diffuser. Compact design (158 mm wide).

PVC pipe connections:

Ports for cementing joint, with external thread for union coupling.

Applications

For spas, hydromassage bathtubs and whirlpool baths.

Operating conditions

Water temperature up to 60 °C.
Room temperature up to 40 °C.
Maximum permissible pressure in the pump casing: 2,5 bar.
Continuous duty.

Motor

2-pole induction motor, 50 Hz (n = 2800 1/min).
SPA: three-phase 230/400 V ± 10%.
SPAM: single-phase 230 V ± 10%, with thermal protector.
Capacitor inside the terminal box.

Insulation class F.

Protection IP X5.

Constructed in accordance with: EN 60335-2-41, IEC 335-2-41;
EN 60335-2-60, IEC 335-2-60.

Patents: EP 0 460 597
US 5 226 790

Certification marks for SPAM

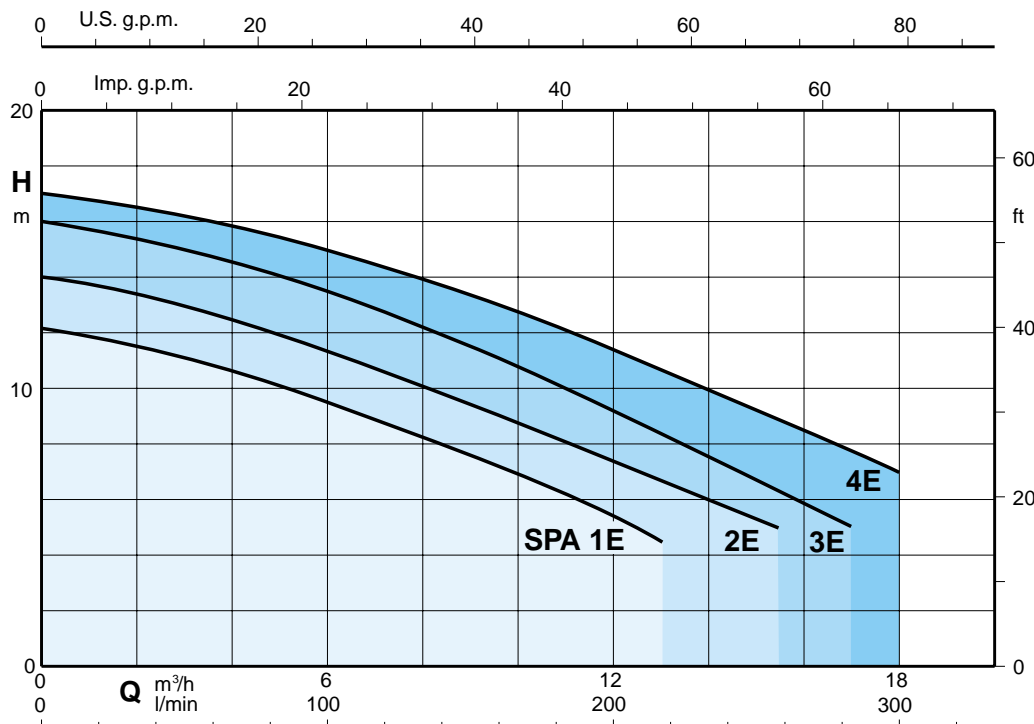


Materials

Component	Material
Pump casing Union coupling	ABS (Acrylonitrile-Butadiene-Styrene)
Diffuser cover Impeller	Glass reinforced thermoplastic: PPO-GF30, NORYL*
Diffuser-wall with wear-ring	Cr-Ni-Mo stainless steel 1.4401 EN 10088 (AISI 316)
Mechanical seal	Ceramic alumina, Carbon, FPM (Viton)

* Trademark of General Electric

Coverage chart n ≈ 2800 rpm



Performance $n \approx 2800$ rpm

	3~ 230 V 400 V		1~	230 V		P ₂		Q										
	A	A		A	kW	kW	HP		m ³ /h	3	6	9	12	13	16	17	18	
SPA 1E	2,8	1,6	SPAM 1E	3,3	0,73	0,45	0,6	H	11	9,5	7,5	5,5	4,5					
SPA 2E	3	1,7	SPAM 2E	4,1	0,9	0,55	0,75		13	11,5	9	7	6,5	5				
SPA 3E	3,7	2,2	SPAM 3E	5,1	1,2	0,75	1		15	13,5	11,5	9	8,5	6	5			
SPA 4E	5	2,9	SPAM 4E	7,4	1,6	1,1	1,5		16,5	15	13,5	11,5	10,5	8,5	7,5	7		

P₁ Max. power input.

P₂ Rated motor power output.

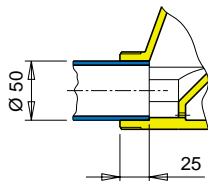
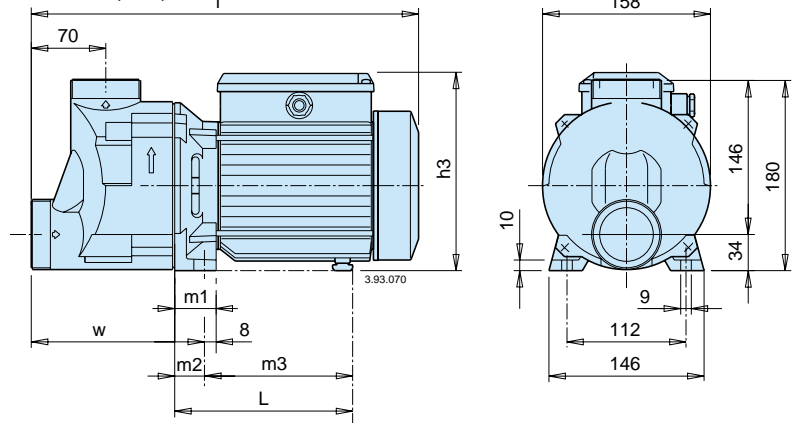
H Total head in m.

Tolerances according to ISO 9906, annex A.

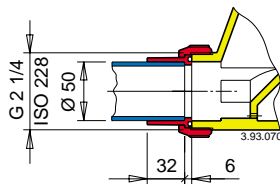
Dimensions and weights

TYPE	mm							kg	
	f	L	h3	m1	m2	m3	w	SPA	SPAM
SPA 1E	333	148	176	34	26	122	161	6,7	6,8
SPA 2E	365	167	185	39	31	136	166	8	9
SPA 3E	365	167	185	39	31	136	166	9	10

SPA 1E, 2E, 3E f

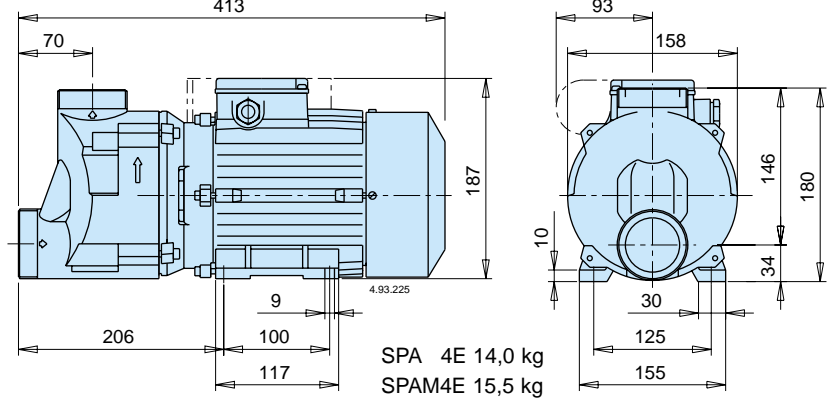


Cemented joint.



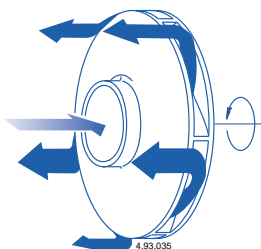
Threaded union coupling.

SPA 4E



SPA 4E 14,0 kg
SPAM4E 15,5 kg

Diffuser with peripheral-longitudinal flow, of stainless steel for **extra reliability**.



Mechanical seal without contact with the shaft, for **extra safety**.

